



**International Conference on  
Multidisciplinary Approaches  
to SDGs & International Partners Meet  
10 | 11 | 12 | 13 January 2024**



**RCSS**  
RAJAGIRI COLLEGE OF  
SOCIAL SCIENCES  
(AUTONOMOUS)

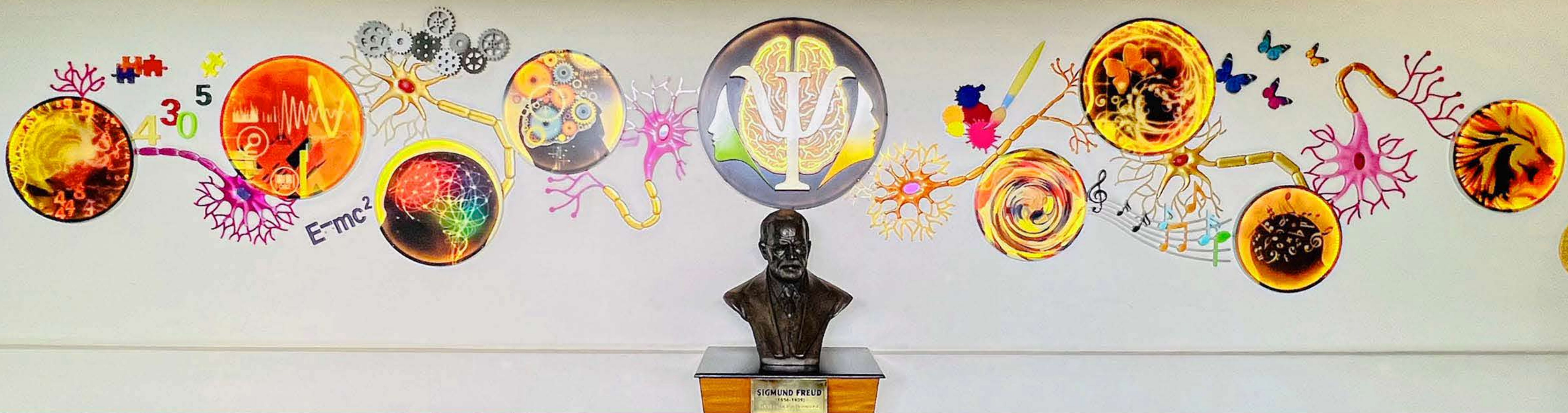
**RAJAGIRI CENTRE FOR BEHAVIORAL SCIENCES AND RESEARCH (RCBSR)  
IN COLLABORATION WITH DEPARTMENT OF LANGUAGES**

**10<sup>th</sup> & 11<sup>th</sup> January 2024**

**INTERNATIONAL CONFERENCE ON BEHAVIOURAL SCIENCE**



# RAJAGIRI CENTRE FOR BEHAVIOURAL SCIENCE AND RESEARCH



## DEPARTMENT OF PSYCHOLOGY

The Psychology Department known also as the 'Rajagiri Centre for Behavioral Sciences and Research' (RCBSR) started from the academic year 2016-17 with the vision to "Be a center for mental health services and training of mental health professionals". We offer an undergraduate and a postgraduate program in Psychology. We take students on a journey through learning and mastery of the human mind and behavior. This is enhanced through real-life applications and also practical experience in our 3 labs- a lab for the UG students, a neuro-diagnostic lab for the PG students, and a PEBL lab for computer-assisted psychology experiments. Students are exposed to the different colors and textures of psychology on a unique and diverse canvas to help prepare them to handle a plethora of opportunities and demands in the field of psychology. We have established an alumni network that brings together budding and working psychologists with hands-on experience, from all over the world. We provide the required resources and knowledge including tie-ups with international universities for research and teaching, thereby ensuring professional and personal success. The department focuses on three prime strategies to attain its vision:

**Academics-** RCBSR currently offers two academic programs – M.Sc. Psychology of 2 years duration (with a clinical leaning) and a 3-year B.Sc. Psychology. The department currently follows the 2017 revised MG University syllabus for B.Sc. and 2019 revised MG university syllabus for M.Sc. program. Apart from the syllabus, the curriculum is an amalgamation of research projects, internships, field trips, workshops and new methods of teaching theory and test. More details can be found in the programs offered tab.

**Research** - Special attention is given to honing research skills by ensuring students in all batches of UG and PG programs conduct a yearly research with the guidance of the faculty. Our students have presented and published several research papers over the last 4 years in national and international forums. Our faculty also have over 40 research publications in well-known journals.

**Training and Practice** - Since 2018, RCBSR also runs a Psychiatric clinic and Psychological Clinic that caters to the psychological requirement of the college and the community. This wing also has 3 community clinics in the neighbourhood, through which the local community in need is also served.

### Vision of the Department



**Be a center for mental health services and training mental health professionals.**

### Mission of the Department



**Our mission is to train mental health professionals, to carry out researches relevant for growth of discipline and to serve mental health needs of the community.**

SUSTAINABLE DEVELOPMENT GOAL

3

Good Health  
and Well-being

SUSTAINABLE DEVELOPMENT GOAL

5

Gender Equality

SUSTAINABLE DEVELOPMENT GOAL

13

Climate Action

SUSTAINABLE DEVELOPMENT GOAL

16

Peace, Justice and  
Strong Institutions

## Major Sub themes for the Conference on Behavioural Science

### Overarching Theme

The last decade has shaken the fabric of society with the Covid-19 pandemic, climate change patterns, and economic & political upheavals. The Behavioural Science sessions address some of the changes that occurred in various spheres in the field of Psychology. We seek discussions on the way forward, across the subthemes spanning around the Sustainable Development Goals Goal 3- Good Health & Well Being, Goal 5- Gender Equality, Goal 13- Climate Action, and Goal 16- Peace Justice and Strong Institutions.

### Relationships over the Life Span

The nature of relationships has changed - the global citizenship of teens and its ensuing mental health issues, trends of singlehood among adults, and extended old age phase have led to new problems in each stage of our lifespan. With the breakdown of families, what is the new unit of society that we foresee ahead?

### Psychology of Addiction

Human beings are regularly challenged by addictive mechanisms. The past two decades witnessed the purview of these addictive tendencies, traversing from psychoactive substances to potential addictive behaviours. Further heed is essential towards these trending addictive behaviours alongside psychoactive substances. The topic focusses on the traditional models of drug abuse & the shifts to be adopted in the assessment, diagnosis, and intervention strategies for these trending addictive behaviours associated with gaming, gambling & internet usage.

### Environmental Psychology

Public Dissonance in environment care and protection is a challenge faced by the world in finding and applying solutions to the ongoing and foreseen natural v/s man-made disasters & calamities. Reducing this dissonance needs a Multidisciplinary Approach further proposing policies and strategies. A Scientific discussion upon the same is at high demand. Behavioral Scientists, Social Workers, Political Activists, Law Makers, and the Public Representatives are to design a Strategic Plan that will be Scientific, Practical, and Result Oriented.

### Forensic Psychology

Forensic science in the new millennium has seen changes in the type of crimes and its investigation method (increase in drug-related and technology-related crimes such as hacking, cyberbullying, malicious software, cybertheft, identity-theft), changes in the types of punishment, and also in the legal system. Psychology in the Courtroom incorporates a variety of responsibilities in both the Civil and Criminal Justice Systems, including conducting Mental Health Evaluations, providing Legal Advices and providing Expert Witness Testimony. Our Team also plans to address crimes initiated by adults and children. A changing trend of the Crimes, it's Investigations, Correctional Strategies & Rehabilitation possibilities are of demand to discussion, to re-integrate Perpetrators & Victims into the community.

### Mindfulness based Therapies

The thoughts, emotions and feelings that we experience every day shape the nature of our reality. Our life is what our thoughts make it. Mindfulness Based Cognitive Therapy encourages to adopt a new and effective way of being and relating to one's own thoughts and feelings. Through this, potentially triggering negative thoughts from evolving into a deep depressive state or harmful behavior is prevented

### Art Therapy

With the world changing at a rampant pace and stressors and challenges in life worsening, we need therapeutic approaches to deal with the parts of our thoughts and feelings we are unaware of. Art therapy helps by giving people a way to talk about psychosomatic problems, trauma, and abuse, which have become more common in the last 20 years. Unlike traditional psychotherapeutic approaches, resolving the psychological struggle happens within the creative process with a boost in self-esteem, problem-solving skills, and communication skills and a reduction in stress, anxiety, and tension.



## DEPARTMENT OF LANGUAGES

Embarking on a linguistic odyssey, the Department of Languages at Rajagiri College of Social Sciences offers a vibrant spectrum including English, French, Hindi, and Malayalam as Common Course I & II for UG programmes, making it a hub of linguistic diversity. Beyond conventional studies, the department introduces enriching programs like Communicative English, S-CLAT, GRIT, and a Certificate Program in Film Making. The innovative pedagogy redefines language education, seamlessly blending linguistic proficiency with a deep appreciation for literature, culture, and humanity. More than just language proficiency, the department nurtures critical self-awareness, shaping responsible, socially sensitive citizens.

### **Major Sub themes in collaboration with the Conference of Behavioural Science**

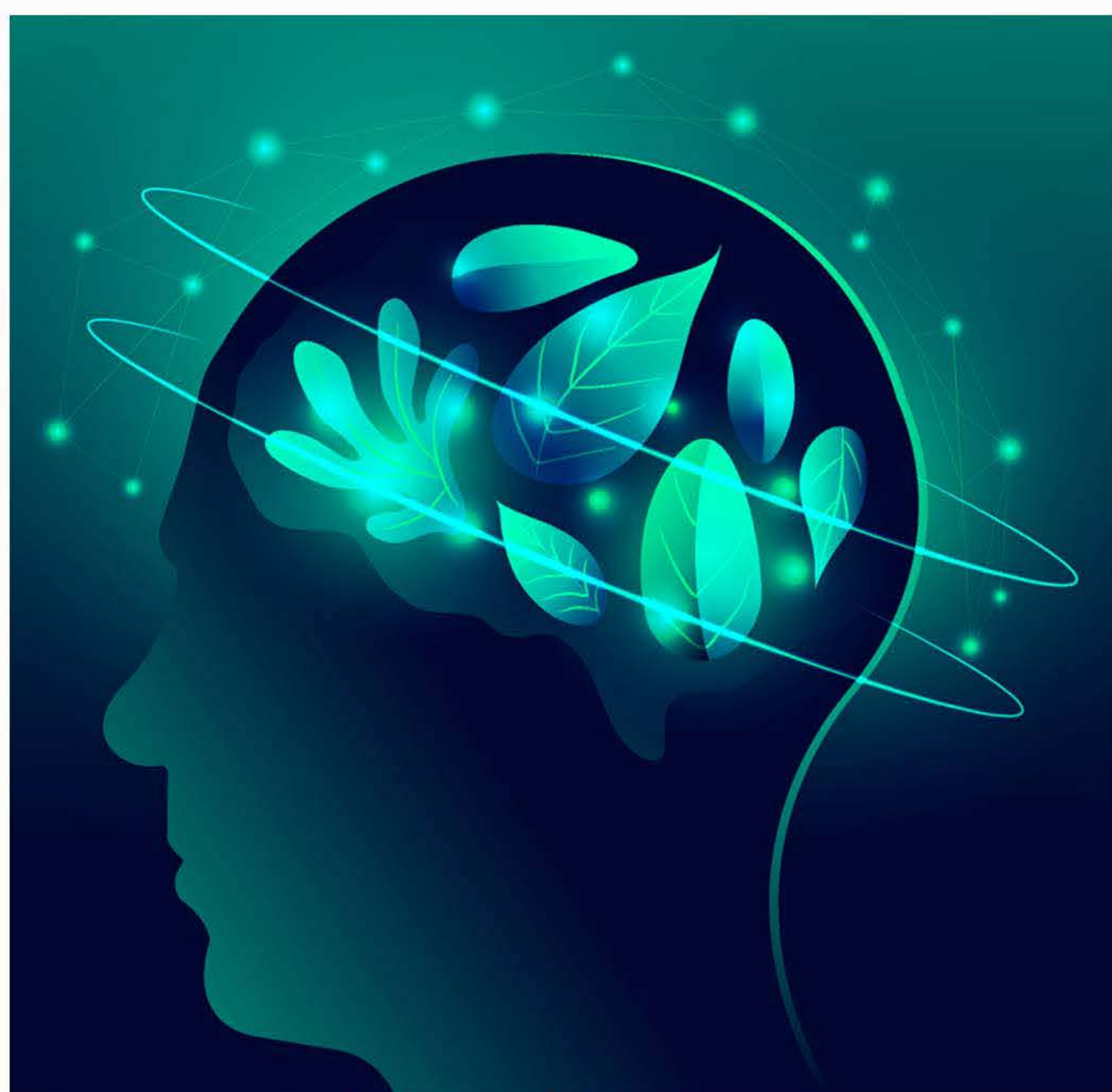
In the ever-evolving landscape of literature, two themes emerge as beacons guiding us through the intricate tapestry of societal dynamics and environmental consciousness: "Sustainability and Reverse Migration" and "Sustainability and Ethnicity." These themes encapsulate the essence of our contemporary world, resonating with relevance and urgency. The following themes are not merely subjects of academic exploration; they are pivotal in navigating the challenges of the 21st century. Through literature, we aim to dissect, discuss, and derive meaningful narratives that not only mirror our current reality but also offer pathways to a sustainable and harmonious future. Join us in this literary odyssey where words become catalysts for understanding, questioning, and envisioning a world that sustains both its people and its rich tapestry of cultures.

### **Sustainability and Reverse Migration**

Delves into the profound implications of the ebb and flow of human movement. In an era marked by interconnectedness, understanding the sustainable aspects of reverse migration, where individuals return to their roots, is paramount. This theme opens avenues to explore the Cultural, Behavioural, Economic and Environmental dimensions of this nuanced phenomenon.

### **Sustainability and Ethnicity**

Encapsulates the delicate interplay between preserving cultural identities and ensuring the sustainable progression of societies. As the world confronts the imperative of sustainable living, delving into the role of ethnicity in this discourse provides insights into how diverse cultural perspectives can contribute to a sustainable future.



## Call for Papers



Abstracts based on original research and practice models are invited for the following

- Oral Presentation
- Poster Presentation

## Important Dates & Deadlines



Last date of Early Bird Registration	10 <sup>th</sup> December 2023
Last Date of Abstract Submission	30 <sup>th</sup> November 2023
Notification of Abstract Acceptance	Within 15 Days of Abstract Submission
Last Date of Full Paper Submission	15 <sup>th</sup> December 2023

## Registration Fees



Category	Early/Spot	Late/Spot
Foreign professionals/ Academicians	\$ 350	\$ 400
Foreign Students	\$ 250	\$ 300
SAARC Countries Professional/ Academicians	Rs. 10000	Rs. 10500
SAARC Countries Students	Rs. 8000	Rs. 8500

## Guidelines for Abstract



- The abstract should be within 300 words of text including the title and keywords (MS Word Doc.)
- The text should be arranged according to the following headlines: Objectives, Design, Model, Result and conclusion.
- The title page of the abstract should include the Title of the paper, Author's name, designation, institution affiliation, mailing address, contact number and email id.
- It is essential that you specify the Theme and Subtheme to which your abstract pertains when submitting it.
- The Abstract should be submitted through the website:

[www.conference.rajagiri.edu/icmas](http://www.conference.rajagiri.edu/icmas)

## Mode of payment



Account name :Rajagiri College of Social Sciences, Kalamassery

Account No. :0224053000005056

Bank :South Indian Bank

IFSC/NEFT Code :SIBL0000224

## Publication

**Selected papers presented in the conference may be considered for publication in proceedings after due review process.**

Registration fee includes (Accommodation (during conference days), breakfast, lunch, tea, dinner & conference kit)

## Contact Details

### International Conference & Partners meet

Rajagiri College of Social Sciences (Autonomous) & Rajagiri Business School Cochin - 683104, Kerala, India

E-mail: [intlcon2024@rajagiri.edu](mailto:intlcon2024@rajagiri.edu)

## Registration Fees



Category	No:of Conference Days	Early Bird	Late/Spot
Indian Professionals/ Academicians	4 days	* Rs. 4000	Rs. 4500
	3 days	* Rs. 3000	Rs. 3500
	2 days	* Rs. 2000	Rs. 2500
	1 day	** Rs. 1000	Rs. 1500
	Half Day	** Rs. 600	RS. 900
Indian Students	4 days	* Rs. 3500	Rs. 4000
	3 days	* Rs. 2500	Rs. 3000
	2 days	* Rs. 1500	Rs. 2000
	1 day	** Rs. 750	Rs. 1250
	Half Day	** Rs. 500	Rs. 800

\* Registration fee includes (Breakfast, lunch , tea, dinner & Conference kit)

\*\* Conference kit won't be provided for those who are attending Half day & one day conference.

For half day session tea, Lunch/dinner will be provided as applicable

\*\*\* The main conference will be held from 10th to 13th Jan. 2024. The participants who wish to attend the Conference on Behavioural Science alone may register for two days.

**Conference Email ID for Communication**  
[conferencepsy@rajagiri.edu](mailto:conferencepsy@rajagiri.edu)

## Chief Coordinator

Dr. Fr. Varghese K. Varghese  
Dean, Department of Psychology

## Coordinator

Dr. Palayoor Benyne Jos  
Contact: +918590593218

## Contact Person

Asst. Prof. Anju S  
Contact: +91 95442 23914

## DEPARTMENT OF PSYCHOLOGY

### Committee Members

Dr. Anita Rajah (HOD)      Dr. Lijo K.J  
Dr. Jessy Fenn              Dr. Amal Tom Jose  
Dr. Kusum Mary George    Dr. Devi NP  
Asst. Prof. Fabeeha Sameer

## DEPARTMENT OF LANGUAGES

### Committee Members

Dr. Achamma Alex (HOD)  
Dr. Jeena Shaji  
Dr. Jacob Alias  
Dr. Bibin Sebastian  
Asst. Prof. Gokul M Nair